

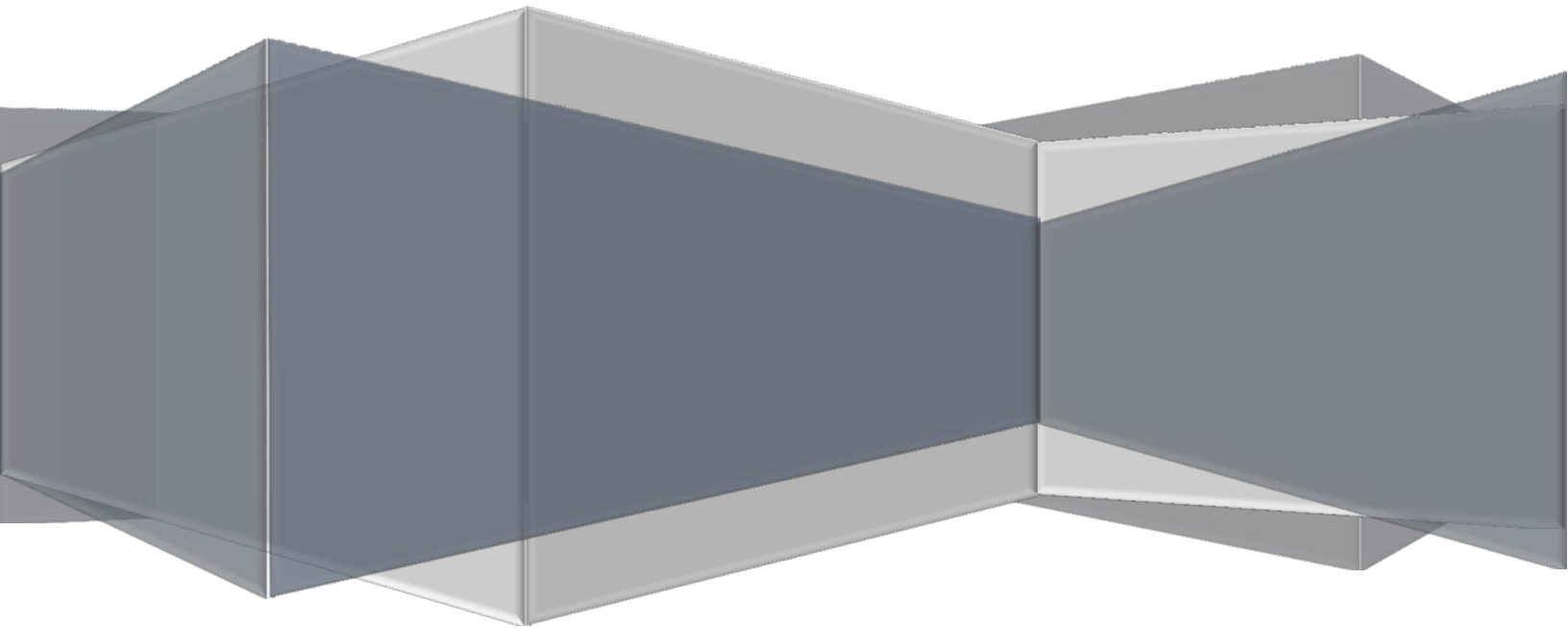
CITY OF LAKE ELSINORE

ANNEX

LOCAL HAZARD MITIGATION PLAN

June 2017

**Prepared by: Rick De Santiago
Emergency Services Coordinator**



CONTACT INFORMATION

CITY OF LAKE ELSINORE

NAME:	Rick De Santiago
TITLE:	Emergency Services Coordinator
ADDRESS:	130 S. Main Street
STATE AND ZIP:	Lake Elsinore, CA 92530
DIRECT CONTACT:	951-674-3124
FAX:	951-471-1251
EMAIL:	rdsantiago@lake-elsinore.org

EXECUTIVE SUMMARY

The purpose of this local hazard mitigation plan is to identify the City's hazards, review and assess past disaster occurrences, estimate the probability of future occurrences and set goals to mitigate potential risks to reduce or eliminate long-term risk to people and property from natural and man-made hazards.

The plan was prepared pursuant to the requirements of the Disaster Mitigation Act of 2000 to achieve eligibility and potentially secure mitigation funding through Federal Emergency Management Agency (FEMA) Flood Mitigation Assistance, Pre-Disaster Mitigation, and Hazard Mitigation Grant Programs.

The City of Lake Elsinore's continual efforts to maintain a disaster-mitigation strategy is on- going. Our goal is to develop and maintain an all-inclusive plan to include all jurisdictions, special districts, businesses and community organizations to promote consistency, continuity and unification.

The County's planning process followed a methodology presented by FEMA and CAL-EMA which included conducting meetings with the Operational Area Planning Committee (OAPC) coordinated by Riverside County Fire – Office of Emergency Services comprised of participating Federal, State and local jurisdictions agencies, special districts, school districts, non-profit communities, universities, businesses, tribes and public.

The plan identifies vulnerabilities, provides recommendations for prioritized mitigation actions, evaluates resources and identifies mitigation shortcomings, provides future mitigation planning and maintenance of existing plan.

The plan will be implemented upon FEMA approval.

PLAN ADOPTION/RESOLUTION

The City of Lake Elsinore's plan will be submitted to Riverside County Fire – Office of Emergency Services who will forward to CAL EMA for review prior to being submitted to FEMA. In addition, we will wait to receive an "Approval Pending Adoption" before taking the plan to our local governing bodies for adoption. Upon approval, the City of Lake Elsinore will insert the signed resolution.

TABLE OF CONTENTS

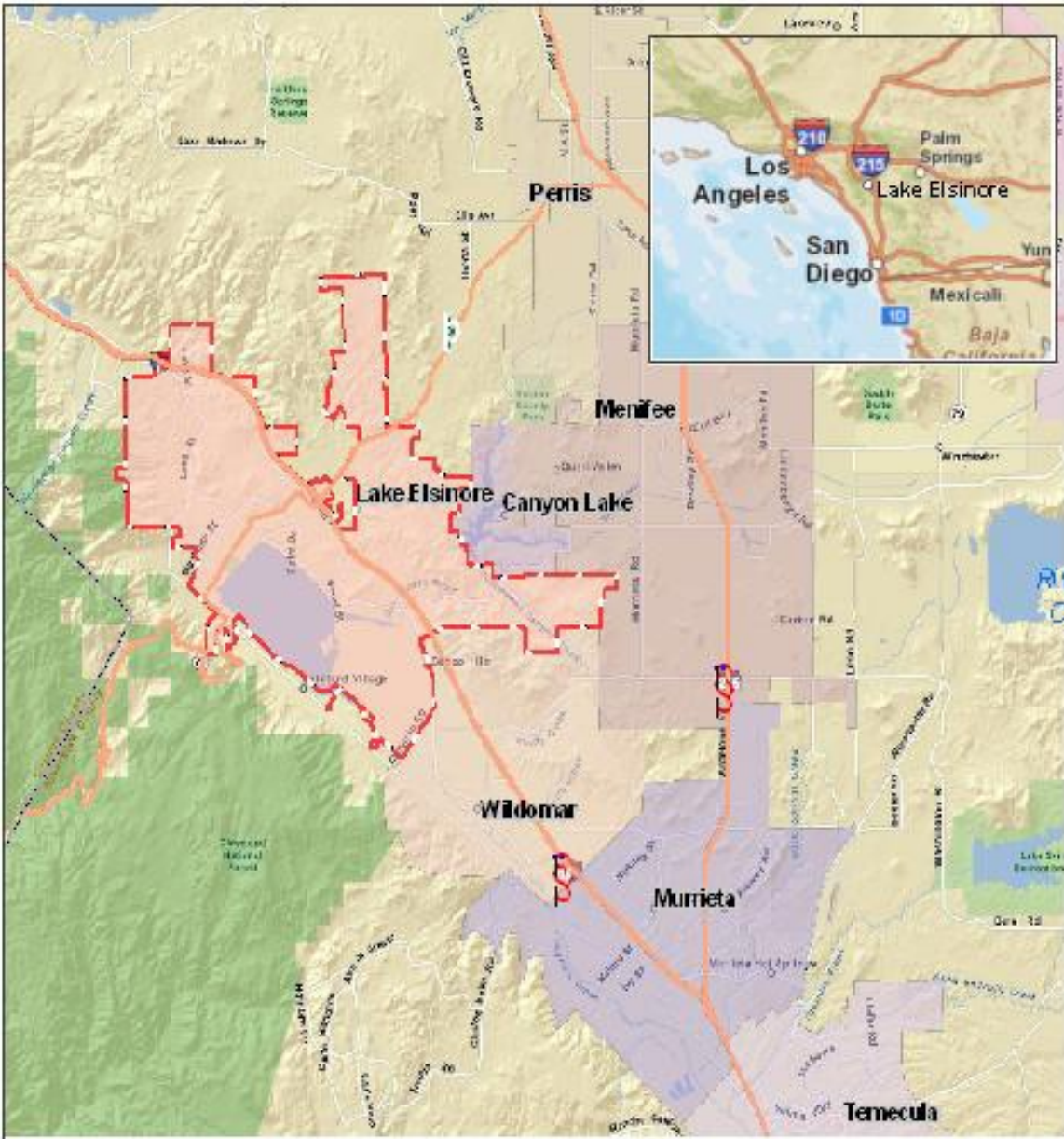
CONTACT INFORMATION	1
EXECUTIVE SUMMARY	2
PLAN ADOPTION/RESOLUTION	3
TABLE OF CONTENTS	4
SECTION 1.0 - COMMUNITY PROFILE	6
1.1 CITY OF LAKE ELSINORE MAP	6
1.2 BRIEF HISTORY	7
1.3 GEOGRAPHY AND CLIMATE DESCRIPTION	7
1.4 POPULATION	8
1.5 ECONOMY DESCRIPTION	9
1.6 LAND USE AND DEVELOPMENT TRENDS	12
SECTION 2.0 - PLANNING PROCESS	12
2.1 LOCAL PLANNING PROCESS	12
2.2 PARTICIPATION IN REGIONAL (OA) PLANNING PROCESS	12
2.3 PUBLIC OUTREACH	13
2.4 EXISTING PLANS AND STUDIES	13
2.5 PLANS ADOPTED BY RESOLUTION	13
SECTION 3.0 – UPDATES AND MITIGATION ACTIONS	14
3.1 UPDATES FROM 2005 PLAN	14
3.2 HAZARD UPDATES	14
3.3 BRIEF STATEMENT OF UNIQUE HAZARDS	14
3.4 MITIGATION PROJECT UPDATE	14
SECTION 4.0 - HAZARD IDENTIFICATION AND RISK ASSESSMENT	16
4.1 CRITICAL FACILITIES AND INFRASTRUCTURES	16
4.2 ESTIMATING POTENTIAL PROPERTY LOSS	18
4.3 TABLE/REPLACEMENT VALUE	18
4.4 IDENTIFICATION OF RISKS AND VULNERABILITIES	19
SECTION 5.0 - COMMUNITY RATING SYSTEM	22
5.1 REPETITIVE LOSS PROPERTIES	22
5.2 NATIONAL FLOOD INSURANCE PROPERTIES	22
SECTION 6.0 - CAPABILITIES ASSESSMENT	24
6.1 REGULATORY MITIGATION CAPABILITIES TABLE	24
6.2 ADMINISTRATIVE/TECHNICAL MITIGATION CAPABILITIES	25
6.3 FISCAL MITIGATION CAPABILITIES TABLE	26
6.4 FUNDING OPPORTUNITIES	26
6.5 MITIGATION OUTREACH AND PARTNERSHIPS	26
SECTION 7.0 - MITIGATION STRATEGIES	27
7.1 GOALS AND OBJECTIVES	28
7.2 MITIGATION ACTIONS	34
7.3 ON-GOING MITIGATION STRATEGY PROGRAMS	34
7.4 FUTURE MITIGATION STRATEGIES	38
SECTION 8.0 - PLAN IMPLEMENTATION AND MAINTENANCE PROCESS	39
SECTION 9.0 - CONTINUED PUBLIC INVOLVEMENT	41
APPENDIX A – MEETINGS AND PUBLIC OUTREACH	42
Figure A-1 – Meeting and Flyer Agenda – May 17, 2011	42

Figure A-2 – Meeting Roster – May 10, 2011	43
Figure A-3 – Meeting Roster – March 20, 2011	44
Figure A-4 – Meeting Roster for May 2011	59
APPENDIX B - UPDATE TO GENERAL PLAN	60
APPENDIX C - CAPITAL IMPROVEMENT PROGRAM	66
Figure C-1 – Project Listing Total Cost	66
Figure C-2 – Project By Funding Source	67
Figure C-3 – Project Cost Estimates	69
APPENDIX D - INVENTORY WORKSHEETS	70
APPENDIX E – CROSSWALK-PLAN REVIEW.....	71

SECTION BLANK

SECTION 1.0 - COMMUNITY PROFILE

1.1 CITY OF LAKE ELSINORE MAP



1.2 BRIEF HISTORY

The City of City of Lake Elsinore was organized, formed and incorporated under the laws of the State of California on April 9, 1888. From earliest times, the 300 natural Sulphur springs that fed Lake Elsinore were believed to have curative and magical properties by its Native American Indian inhabitants. These first inhabitants were called the Lake Entengvo Wumoma, which meant "Hot Springs by the Little Sea."

Joining the Native American Indian inhabitants, the Spanish missionaries, soldiers, ranchers and American trappers came to the valley. The Spanish padres renamed the lake "Laguna Grande."

Early settlers established a town site around the lake, which they renamed Elsinore, representing the immortality given the town of Elsinore in Denmark by Shakespeare in "Hamlet." In the 1920s and 1930s, the City became a playground for movie stars and the lake a destination for world-record-setting boat races and Olympic swim team training. Sportsmen hunted duck on the lake and deer in the hills.

Lake Elsinore has a "Council-Manager" general law form of government where the City Manager is appointed by the City Council and is the Chief Executive Officer of the Municipal Corporation. The Council acts as the board of directors of the municipal corporation and meets in a public forum where citizens may participate in the governmental process. The City Council consists of five members elected at-large, on a non-partisan basis. Residents elect the Mayor and four Council members, making each accountable to the entire citizenry.

1.3 GEOGRAPHY AND CLIMATE DESCRIPTION

The City of Lake Elsinore is a corporate city nestled at the foot of the Cleveland National Forest, within the southwest portion of Riverside County. The City boasts that Lake Elsinore is the largest natural recreational lake in Southern California and is bounded by wetlands. City of Lake Elsinore is located on the I-15 corridor at the intersection of State Route 74, 20 miles south of State Route 91. We are approximately a one-hour drive east from metropolitan Orange County and forty-five minutes southwest from Riverside. San Diego is approximately a one-hour-and-fifteen-minute drive south on I-15. Highway 74 connects westward over the Ortega Mountains to Orange County beach communities and eastward to mountain and desert cities in Riverside County. Lake Elsinore is 73 miles southeast of Los Angeles and 74 miles northeast of San Diego. The average rainfall per year is less than 12 inches total. The average winter low temperature is 35.8 degrees, while the average summer high is 98.4 degrees. The community enjoys a yearly average daily temperature of 78.5 degrees.

1.4 POPULATION

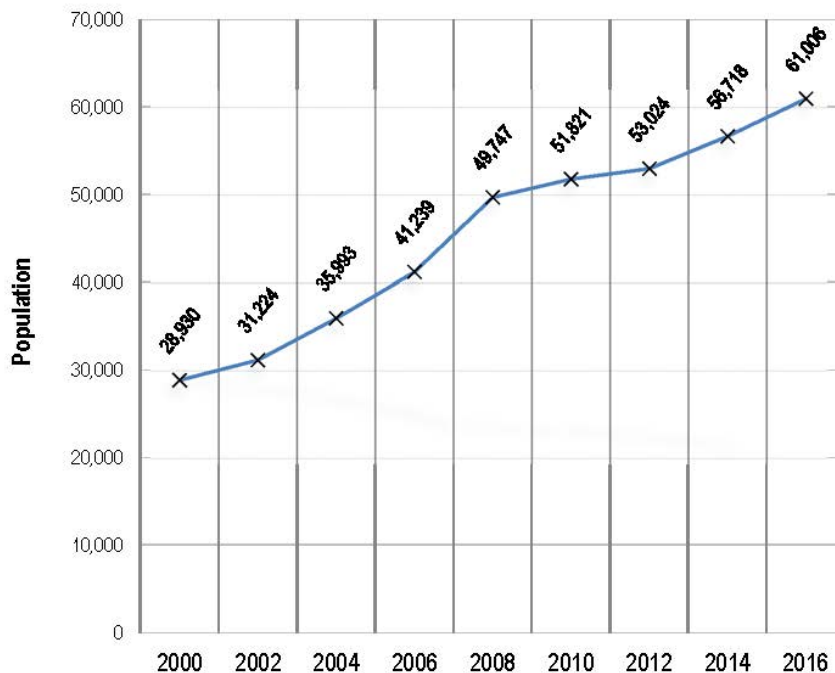
The 2016 estimated population of the City of Lake Elsinore, California is at 58,060 and has a seasonal increase in tourist activity during the spring and summer months. The City's Diamond Stadium is home to the Lake Elsinore Storm AAA minor league baseball team, affiliates of the Los Angeles Angels. Other major attractions include Skydive Elsinore, the Lake Elsinore Outlets and the Lake Elsinore Motorsports Park, and Rosetta Canyon Sports Park

Figure 1.4.1 – Population Growth

Population

Population Growth

Population: 2000 - 2016



Source: California Department of Finance, E-5, 2016

- Between 2000 and 2016, the total population of the City of Lake Elsinore increased by 32,076 to 61,006 in 2016.
- During this 16-year period, the city's population growth rate of 110.9 percent was higher than the Riverside County rate of 51.9 percent.
- 2.6% of the total population of Riverside County is in the City of Lake Elsinore.

1.5 ECONOMY DESCRIPTION

The City of Lake Elsinore, California is a mixed community of residential and businesses with a 2017 population of 58,060 and growing. The median age of residents is 31 years and the median household income is \$61,248. Our total number of households is 16,641 and the total number of housing units is 17,839. This reflects an increase of over 8,000 dwelling units, with a corresponding population increase of 23,493 between 2000 and 2011. Our median new and resale home price is \$202,666. The Retail taxable sales in 2008 were \$644,113 million and the total taxable sales in 2008 amounted to \$731,831 million. City of Lake Elsinore's assessed valuation in FY 2009 was \$11.8 billion. Hotel room sales in 2009 were estimated at \$35.3 million.

Figure 1.5.1 – Average Annual Salaries

Average Salaries

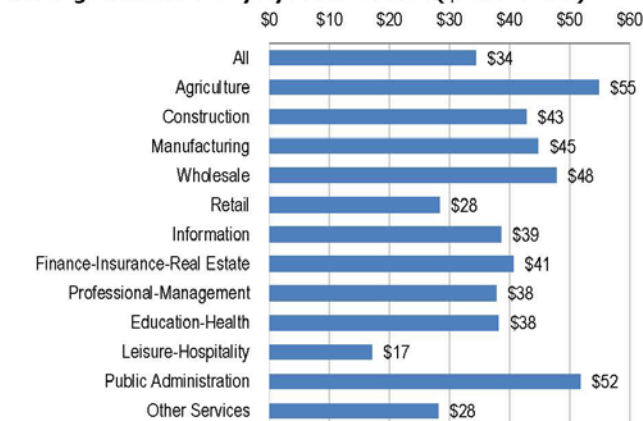
Average Annual Salary: 2003, 2009, 2011, and 2015



Source: California Employment Development Department, 2003 - 2015

- Average salaries for jobs located in the city increased from \$29,072 in 2003 to \$34,368 in 2015, a 18.2 percent change.
- Note: Dollars are not adjusted for annual inflation.

Average Annual Salary by Sector: 2015 (\$ thousands)



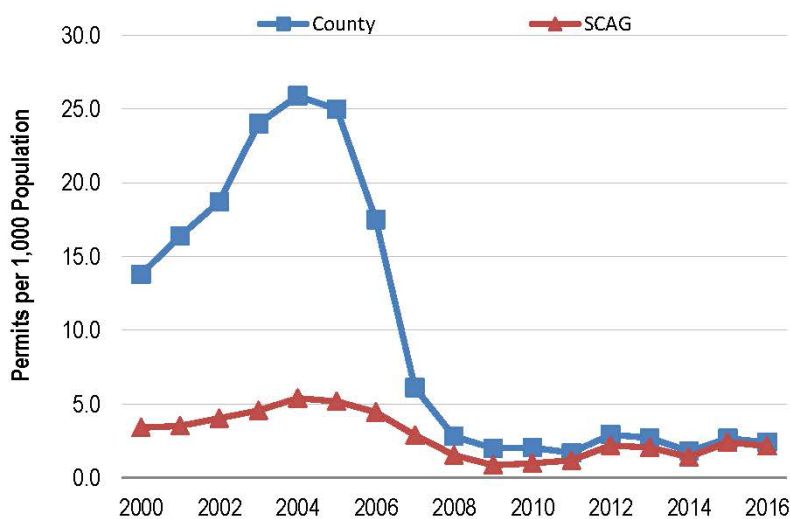
Source: California Employment Development Department, 2015

- In 2015, the employment sector providing the highest salary per job in the city was Agriculture (\$54,851).
- The Leisure-Hospitality sector provided the lowest annual salary per job (\$17,108).

Figure 1.5.2 - Housing Production and Residential Units W/Permits



Permits Issued for all Residential Units per 1,000 Residents: 2000 - 2016



Source: Construction Industry Research Board, 2000 - 2016

- In 2000, Riverside County had 13.8 permits per 1,000 residents compared to the overall SCAG region figure of 3.4 permits per 1,000 residents.
- For the county in 2016, the number of permits per 1,000 residents decreased to 2.4 permits. For the SCAG region overall, it decreased to 2.1 permits per 1,000 residents.

City of Lake Elsinore, California
Principal Employers
2016 Year Compared to 2007

	2016		2007	
	Number of Employees	Percent of Total Employment*	Number of Employees	Percent of Total Employment*
EMPLOYMENT				
Estimated Total Employment *		26,900 (1)	(1)	21,600
EMPLOYER				
Lake Elsinore Unified School District	2,618	9.73%	1,060	4.91%
M & M Framing	500	1.86%	- (2)	0.00%
Stater Bros (3 locations)	299	1.11%	165	0.76%
Lake Elsinore Hotel & Casino	253	0.94%	- (2)	0.00%
Costco	236	0.88%	250	1.16%
Walmart Store	235	0.87%	228	1.06%
Riverside County - Department of Social Services	196	0.73%	- (2)	0.00%
EVMWD (Elsinore Valley Mun Water Dist)	154	0.57%	- (2)	0.00%
Home Depot	143	0.53%	200	0.93%
Target	140	0.52%	- (2)	0.00%
Total Top 10 Employers	4,774	17.75%	1,903	8.81%

Notes:

(1) Total City Labor Force provided by EDD Labor Force Data.

(2) Data not available or Company not in business for 2007

Source:

MuniServices, LLC

Results based on direct correspondence with City's local businesses.

1.6 LAND USE AND DEVELOPMENT TRENDS

The City of Lake Elsinore has experienced a growth rate of over 179% since 2000.

Year	2000	2010	2017	2020	2035
Population	28,930	51,821	62,092	70,500	93,800
Housing	9,505	16,253	18,477	21,000	28,700

Due to the lake and existing build-out of the core of the City, most development potential is to the north and east areas of the City. (See Table 2.2 in Section 2.5 of the Riverside County OA MJHMP projected development trends).

SECTION 2.0 - PLANNING PROCESS

2.1 LOCAL PLANNING PROCESS

1(b)

Our City coordinated with multiple cities and agencies throughout Riverside County in the creation/update of our LHMP Annex. The cooperation and discussions both in regional meetings, community outreach and in internal meetings allowed for both “big picture” and “local jurisdiction” views of mitigation need and possibilities.

Representatives from the City of Lake Elsinore were invited to participate in the update through various meetings and emails. They include the following personnel:

- Building & Safety – Building Code Enforcement Manager
- Planning - Director
- Finance – Finance Manager
- GIS – Planning Manager
- Engineering – Sr. Engineering Tech.
- Parks and Recreation – Management Analyst
- Fire – Assistant Fire Marshal
- Public Works departments – Public Works Superintendent

These representatives met in May of 2017 to review past hazards as well as identify and prioritize appropriate local hazard mitigation strategies. The City of Lake Elsinore’s General Plan also contains an Environmental Hazards Element that outlines hazards and mitigation steps. The City is currently updating its General Plan which includes goals, policies, and programs regarding environmental hazards, the transport of hazardous materials, emergency operation plan (EOP) and to provide an efficient and effective public safety.

2.2 PARTICIPATION IN REGIONAL (OA) PLANNING PROCESS

The City of Lake Elsinore participated in the Regional LHMP planning process with

the Riverside County Operational Area by attending LHMP meetings and public hearings.

The City of Lake Elsinore participated in Riverside County workshops, conferences, and meetings, including:

- Attendance at the 12/08/16 Riverside County & City LHMP Workshop #1
- Attendance at the 02/07/17 Riverside County & City LHMP Workshop #2
- Attendance at the 06/06/17 Riverside County & City LHMP Workshop #3

In addition, the City of Lake Elsinore has provided written and oral comments on the multi-jurisdictional plan and provided information to Riverside County EMD staff.

2.3 PUBLIC OUTREACH

Public comment opportunities for the LHMP will be provided for through the Public Safety Advisory Committee meetings, through placement of the draft document on the City website, and the public hearing portion of City Council meeting(s). The following Southwest Comm. meetings were open for public comment:

- May 16, 2017

(See Appendix A for attendance roster and agenda).



- Maintenance & Operations
Bids/RFPs & Results
+ Documents
FAQ
Local Hazard Mitigation Plan
Potholes
Storm Drains
Street Lights
Street Maintenance Division
Streetscape
Street Signs
Street Sweeping
Traffic Signals
Tree Trimming
Staff Directory

[City Hall](#) » [City Departments](#) » [Public Works](#) » [Maintenance & Operations](#) »

LOCAL HAZARD MITIGATION PLAN

Font Size: [+](#) [-](#) [Share & Bookmark](#) [Feedback](#) [Print](#)

While no one can predict or protect the City against every possible hazard, potential impacts can be anticipated and steps taken to avoid or reduce the harm they may cause. The effort to draft a Local Hazard Mitigation Plan is part of an ongoing process to evaluate the risks that hazards pose to the City of Lake Elsinore and will set the framework for the community to pursue in order to reduce these risks. This work is being supported by a grant from the Federal Emergency Management Agency, and is a prerequisite to obtain future funds for construction of hazard mitigation projects, such as flood detention basins.

The public is welcome and encouraged to participate in the process and to comment on the draft Hazard Mitigation Plan during its drafting stages and prior to seeking final approval from the Federal Emergency Management Agency. To learn more about Hazard Mitigation Planning, or to submit comments, please use the links below.

Public Outreach Opportunities

Learn who is involved and what opportunities exist for public input.

Draft Local Hazard Mitigation Plan / Available for Review and Comment

The City welcomes your review and comment while the plan is under construction. As portions of the plan are drafted, they will be posted here: [Local Hazard Mitigation Plan \(519 KB\)](#)

2. 4 EXISTING PLANS AND STUDIES

1(f) LEGP
attached

The LHMP mitigation strategies will be consistent with the Environmental Hazards Element of the City of Lake Elsinore General Plan.

2. 5 PLANS ADOPTED BY RESOLUTION

Upon approval by FEMA, the LHMP will be presented to the City Council of Lake Elsinore in a public meeting for adoption via an official Resolution.

SECTION 3.0 – UPDATES AND MITIGATION ACTIONS

3.1 UPDATES FROM 2012 PLAN

There were 4 hazards that occurred from 2005 to present. No potential new hazards have been identified since the approval of the 2005 plan.

3.2 HAZARD UPDATES

The City of Lake Elsinore planning team has reviewed the hazards that affect the City and summarized their frequency of occurrence, spatial extent, potential magnitude, and significance specific to Lake Elsinore and have concluded that all changes or additional hazards from the 2005 plan are listed below.

3.3 BRIEF STATEMENT OF UNIQUE HAZARDS

The most prominent hazards faced by residents of City of Lake Elsinore are a major earthquake on the Elsinore Fault line and flooding potential from 100-year storm events in winter months. A long-term power outage in summer months could produce life threatening extreme heat conditions for residents without access to air conditioning. The City of Lake Elsinore could also be impacted by terrorism or bio-terrorism that initially targets the Orange County Area, and then spreads the impacts to all neighboring communities.

The City of Lake Elsinore has experienced the following Emergency Incidents since 2000:

- Winter storm flooding January-February 2014, \$95,000 in damages.
- Winter storm flooding May-April 2005, \$53,000 in damages
- Severe wind damage October-December 2007, \$15,000 in damages
- Winter storm flooding and high winds March 2010, \$68,000 in damages
- Winter storm flooding and high winds December 2010, \$60,000 in damages
- Regional power outages September 8, 2011, no damages reported
- Winter storm flooding and high winds January 2017, \$500,000 in damages

3.4 MITIGATION PROJECT UPDATE

The following table identifies a list of mitigation projects that are in progress.

Figure 3.4.1 – Mitigation Project Updates

PROPOSAL NAME	PROPOSAL LOCATION	PROPOSAL TYPE	HAZARD IDENTIFICATION & ANALYSIS	DESCRIPTION OF MITIGATION ACTION	RESPONSIBLE PARTIES	FUNDING SOURCE	Has this mitigation strategy been evaluated to determine cost benefits?	STATUS
Crossing barriers on roadways	Various locations throughout City	Flood & mud flow mitigation	Numerous locations in the City have been identified as hazardous during rain events due to flooding and mud. Vehicles and pedestrians have been stuck in the past	Install swing gates that can be deployed across the roadway during heavy rain events.	City of Lake Elsinore and possibly Riverside County Flood Control	General Fund and Hazard Mitigation Grant Funding	Yes	Completed
Drainage Improvements	Lakeshore Drive	Flood mitigation	Lakeshore Drive north of Diamond Dr. has several locations that routinely flood during heavy rain events creating a hazard for vehicular and pedestrian traffic.	Construct drainage improvements to channel the storm flows under the street.	City of Lake Elsinore	General Fund	Yes	Completed
Seismic Retrofit	City Hall and Cultural Center	Retrofit historic structures to withstand earthquake	City Hall and the Cultural Center are historic buildings constructed of unreinforced masonry. They are used daily for City operations and have been evaluated as structurally unsound to withstand an earthquake.	Reinforce the structures to withstand a seismic event.	City of Lake Elsinore	General Fund and FEMA Grant	Yes	Completed

See Appendix C – Cost benefits are based upon Proposed CIP Capital Improvement Program Budget and funding sources.

SECTION 4.0 - HAZARD IDENTIFICATION AND RISK ASSESSMENT

The City of Lake Elsinore's Planning Team has identified in the table below a list of critical facilities and other community assets identified as important to protect in the event of a disaster. An inventory of critical facilities in the City of Lake Elsinore is kept in the City Emergency Operations Center.

4.1 CRITICAL FACILITIES AND INFRASTRUCTURES

Table 4.2.1 – List of Lake Elsinore Critical Facilities

Lake Elsinore Critical Facilities Type	Number
Airports	1
Communications Centers	0
Detention Centers	0
Emergency Command Centers	0
Emergency Operations Centers	1
Fire Department Stations	4
Health Care Facilities	0
Law Enforcement Facilities	2
Maintenance Yards	1
Senior Center	1
Elderly Care Facilities	0
Library	2
Schools	12
Public Utilities—Water/Sewer	1
Totals	24

Figure 4.2.1: Lake Elsinore Critical Facilities



4.2 ESTIMATING POTENTIAL PROPERTY LOSS

Please refer to Riverside County Operational Area MJHMP Section 4.5 for the property loss value for the City of Lake Elsinore.

(Appendix D- See Part II – Page 18 - Development Trends Questionnaire)

4.3 TABLE/REPLACEMENT VALUE

Name of Asset	Replacement Value (\$)	Hazard Specific Info.
City Hall	\$3,692,667	Seismic susceptibility due to age of structure
Fire Department, Station 10	\$302,327	
Fire Department, Station 85 (Grand Ave)	\$2,297,555	
Fire Department, Station 94	\$2,749,870	
Fire Department, Station 97	\$3,213,527	
Lake Elsinore Public Works Yard Garage	\$530,571	
Lake Elsinore Public Works Yard Office	\$870,796	
Office Trailer at City Hall	\$493,385	
Concession Stand at City Park	\$147,909	
Teen Center, 400 Graham	\$478,448	
Community Center, 300 Graham	\$1,506,387	
Lets Yard	\$20,045	
Museum	\$309,532	Seismic susceptibility due to age of structure
Swick-Matich Park Facilities	\$626,592	
Senior Center, Lakeshore Dr.	\$859,945	
Yarbrough Park Facilities	\$118,476	
Tuscany Hills Park Facilities	\$384,974	
Cultural Center	\$735,241	Seismic susceptibility due to age of structure
Summerhill Park Facilities	\$189,190	
Summerlake Park Facilities	\$259,976	
Stadium	\$15,540,956	
McVicker Canyon Park Facilities	\$941,306	
City Campground	\$1,899,824	Flood susceptibility
Stadium /Amphitheatre	\$17,599,518	

* Above data based on CJPIA Property Schedule

4.4 IDENTIFICATION OF RISKS AND VULNERABILITIES

Hazard	RANKING 1 = High / 4=Low		
	Severity	Probability	Priority
Flood	2	1	1
Wild Fire	1	2	2
Earthquake	1	2	3
Severe Weather	4	3	4
Hazardous Materials	3	3	5
Air Quality	4	2.5	6
Dam Failure	2	4	7
Drought	2	4	8

1. Flood –

The City of Lake Elsinore has experienced flood damage from numerous winter storms in the past and may continue to have future damages from flooding. Heavy rains can overwhelm the City's storm drain system and create localized flood problems. Significant portions of the City and the sphere of influence (SOI) are located within the FEMA mapped 100-year special flood hazard zones. The City of Lake Elsinore has identified flooding sources within the City that include Arroyo del Toro, Channel H, Elsinore Spillway Channel, Lake Elsinore, Leach Canyon Channel, Lime Street Channel, McVicker Canyon, Ortega Wash, Ortega Channel, Rice Canyon, San Jacinto River, Stovepipe Canyon Creek, Temescal Wash, Wash G, Wash I, Murrieta Creek, Wasson Canyon Creek, and potentially Railroad Canyon Dam if the incidence of failure occurs. (See Riverside County OA MJHMP Section 5.3.9)

2. Wild Fire

Wildfire susceptibility in the City of Lake Elsinore is defined as moderately high. The combination of Southern California's Mediterranean climate, with its winter and spring rainfall and hot, dry summers, and the frequency of high wind velocity creates optimum conditions for wildfires. The annual rainfall pattern supports grasses, shrubs, and trees, and the hot arid summers result in dry vegetation. This readily combustible material can be easily ignited and will burn hot and fast, especially during high wind conditions. (See Riverside County OA MJHMP Section 5.3.3).

3. Earthquake

The City of Lake Elsinore is located within the Elsinore Fault zone. The Elsinore Fault consists of multiple strands, many which are recognized as active and zoned by the State of California under the Alquist-Priolo Act (Hart and Bryant 1997). Risk of surface rupture along these zoned active traces is substantial. Additionally, the County has zoned additional faults in the City. The Elsinore Fault is believed to can generate earthquakes with moment magnitudes in the range of 6.5–7.5, with a recurrence interval of approximately 250 years between major events. Smaller events may occur more frequently. Thus, the City and the SOI are likely to experience repeated moderate to strong ground shaking generated by the Elsinore fault in the foreseeable future. The City and surroundings also have the potential to experience significant ground shaking because of seismic activity on many the Peninsular Ranges' other active faults including the San Andreas Fault. (See Riverside County OA MJHMP Section 5.3.1).

4. Severe Weather- Heat/Wind/Cold

The City of Lake Elsinore participates with the Riverside County Office of Emergency Services plan for extreme heat conditions and has a cooling station located at the City of Lake Elsinore Senior Center, which is located at 420 E. Lakeshore Drive in Lake Elsinore. (See Riverside County OA MJHMP Section 5.3.13).

5. Hazardous Materials

The City of Lake Elsinore has some businesses and activities that involve the transport, storage, or use of toxic or hazardous materials. Hazardous materials are defined as those that pose a potential threat to human health, having the capacity to cause serious illness or death. The term "hazardous materials" includes radioactive waste and explosives as well as substances such as gasoline, pesticides, and household cleaning products. While the use of hazardous materials is carefully regulated, the City seeks to reduce the potential for injury or damage in the event of accidents or spills.(See Riverside County OA MJHMP Section 5.3.13).

6. Air Quality: Severity – 2, Probability – 3, Ranking 1

Just south of Lake Elsinore, the Lake Elsinore Convergence Zone acts as an invisible boundary that obstructs much of the inland basin air pollutants from continuing south beyond the Lake Elsinore area. Coastal winds within the Lake Elsinore Convergence allow air pollutants to be dispersed just south of the convergence zone and accumulate within the Lake Elsinore area, including surrounding communities to the north and east. On-road motor vehicles in the Southern California Air Basin are the largest contributors to CO, oxides of nitrogen (NOX), and reactive organic gas (ROG) emissions; other on-road and off-road mobile emission sources are also significant contributors to CO and NOX emissions. Area-wide and stationary sources contribute to the remainder of air pollutant emissions within the SCAB. While high growth rates are often associated with corresponding increases in emissions and pollutant concentrations

7. Dam Failure

The City of Lake Elsinore lies below the Railroad Canyon Dam. Data available through NATDAM identifies it as a dam where failure or misoperation will probably cause loss of human life. (See Riverside County OA MJHMP Section 5.3.15).

8. Drought

The City of Lake Elsinore relies on annual rainfall and urban runoff to recharge the Lake. The Lake is a source of recreation and tourism in the City. In the event of a drought, businesses throughout the City would be impacted by reduced use of the lake due to lower water levels and occurrence of fish kills. Homeowners would be impacted to a lesser degree due to inability to adequately water their landscaping. (See Riverside County OA MJHMP Section 5.3.11).

See Part II - Inventory Worksheet Page 18 for complete ranking chart.

SECTION 5.0 - COMMUNITY RATING SYSTEM

5.1 REPETITIVE LOSS PROPERTIES

We have 5 repetitive loss properties relating to flooding that occurred in the City of Lake Elsinore prior to the construction of the Lake Management Program improvements.

City	Mitigated?	Insured?	Date of Loss	Date of Loss	Total Paid
LAKE ELSINORE	YES	NO	02/14/1980	01/05/1979	\$ 91,618.83
LAKE ELSINORE	NO	NO	12/04/1982	03/15/1980	\$ 21,052.64
LAKE ELSINORE	NO	NO	04/15/1983	08/11/1980	\$ 16,436.09

(See Section 6.0 Page 318 of the Riverside County Multi-Jurisdictional Hazard Mitigation Plan for more information on repetitive loss properties.)

5.2 NATIONAL FLOOD INSURANCE PROPERTIES

- Describe participation in NFIP, including any changes since previously approved plan.*** The City of Lake Elsinore has participated in the National Flood Insurance Program since 1980.
- Date first joined NFIP.*** September 17, 1980
- Identify actions related to continued compliance with NFIP.***

The City maintains compliance with the NFIP program through adoption and enforcement of the State Department of Water Resources Model Flood Damage Prevention ordinance(s). In 2017, the City adopted updates to the ordinance in compliance with the state model.

Additionally, City Ordinance 1280, Flood Damage Prevention and 1105, Floodplain Management provide for levels of flood damage protection that exceed the NFIP minimum standards by requiring freeboard of 2-3 feet above the base flood elevation in special flood hazard zones. New Development and/or Significant Re-Development projects are conditioned to comply during the design review and/or CEQA processes by the Planning, Building and Engineering Departments.

Further, in 2017, the City adopted the California Building Code revisions which provided for a higher level of protection for New Development and Significant Redevelopment projects proposed in the special flood hazard zones.

- d. ***CRS member?*** The City of Lake Elsinore is a CRS member.
- e. ***CRS class?*** CRS class is 8.
- f. ***Describe any data used to regulate flood hazard area other than FEMA maps.*** Flood Insurance Studies and area topography maps
- g. ***Have there been issues with community participation in the program?***
No
- h. ***What are the general hurdles for effective implementation of the NFIP?***
None
- i. ***Summarize actions related to continued compliance with NFIP***

(c-2 and c-4)

In the early to mid '90s, the City joined with the US Army Corps of Engineers, Elsinore Valley Municipal Water District and Riverside County Flood Control and Water Conservation District to form the Lake Management Plan. Implementation of the plan included construction of a levee in the back basin, dedication of wetlands conservation area; formalization of inflow and outflow channels and imposition of stricter development standards for properties in flood prone areas. The City provides information to residents regarding flood hazards, actions they can take to be safe during a flood event, flood insurance requirements, and requires that new development and significant redevelopment comply with the City's flood ordinances and meet FEMA standards for construction. In 2017, the City adopted updates to its Flood Damage Prevention ordinance in compliance with the state model as well as the California Building Code revisions which provide for a higher level of flood protection than before.

- j. ***Repetitive Loss Properties*** -Upon joining the CRS, the City had 10 repetitive loss properties; we now have 5.

Other risks:

The City of Lake Elsinore shares the same risks and vulnerabilities as the rest of the planning area.

SECTION 6.0 - CAPABILITIES ASSESSMENT

6.1 REGULATORY MITIGATION CAPABILITIES TABLE

Regulatory Tool	Yes/No	Comments
General plan	Yes	2011 update
Zoning ordinance	Yes	Reviewed periodically for compliance with current general plan, state and federal laws
Subdivision ordinance	Yes	
Site plan review requirements	Yes	Ongoing. All new development, significant redevelopment, temporary use permits, conditional use permits, grading permits and building permits require site plan review and approval.
Floodplain ordinance	Yes	Updated city-wide ordinance to provide for higher standards for compliance in 2010; supplemental ordinance with even higher regulatory standards in place for area directly surrounding the Lake.
Other special purpose ordinance (storm water, water conservation, wildfire)	Yes	Water Conservation Ordinance, Multi-Species Habitat Conservation Plan, Water Efficient Landscape Ordinance; Flood Damage Prevention Ordinance, Flood Plain Management Ordinance, Storm Water Pollution Prevention Ordinance.
Building code	Yes	Version: Adopted California Building Code in 2010....
Fire department ISO rating	Yes	The overall Fire Department Operation was "Class 4" rating countywide. The exception to the "Class 4" rating would be the outlying areas that are further than five (5) "linear" miles from a fire station and/or have no domestic (hydrants) water infrastructure for fire protection, these areas are still rated as a "Class 9". There are few areas that fit into this exception and each case must be evaluated individually to see which rating applies.
Erosion or sediment control program	Yes	Soil disturbance that is permitted requires implementation of an erosion and sediment control plan.
Storm water management program	Yes	Updated Storm Water Ordinance in December 2011 to provide for increased legal authority and higher regulatory standards. Additionally, the City conducts compliance activities to ensure compliance with the Santa Ana Region NPDES MS4 Permit.
Capital improvements plan	Yes	Five-year plan; updated annually.
Economic development plan	Yes	
Local emergency operations plan	Yes	Emergency Operations Plan, May 2010
Flood Insurance Study or other engineering study for streams	Yes	Adopted 2008 F E M A Flood Insurance Study.

6.2 ADMINISTRATIVE/TECHNICAL MITIGATION CAPABILITIES

Personnel Resources	Yes/No	Department/Position
Planner/engineer with knowledge of land development/land management practices	Yes	Planning Division: Planning Manager
Engineer/professional trained in construction practices related to buildings and/or infrastructure	Yes	Public Works Department: City Engineer, Capital Improvement Project Manager and Building and Safety Division: Building & Safety Manager, Building Inspector
Engineer with an understanding of natural hazards	Yes	Engineering Division: City Engineer
Personnel skilled in GIS	Yes	GIS Analyst Engineering Division: Engineering Technician II
Full time building official	Yes	Building and Safety Division: Building Official
Floodplain manager	Yes	Public Works Department: City Engineer
Emergency manager	Yes	City Manager's Office: City Manager
Grant writer	Yes	Public Works Department: Engineering Technician, Public Works Superintendent, Lake, Parks and Recreation Department: Analyst
GIS Data—Land use	No	Assistant City Manager's Office: Contract
GIS Data—Links to Assessor's data	Yes	City Manager's Office: GIS Analyst, IT Supervisor
Warning systems/services (Reverse 9-11, outdoor warning signals)	Yes	Reverse 911, Email notification
Storm Water Pollution Prevention/NPDES Coordinator	Yes	Engineering Department: Senior Engineering Technician

6.3 FISCAL MITIGATION CAPABILITIES TABLE

Financial Resources	Accessible / Eligible to Use (Yes/No)	Comments
Community Development Block Grants	Yes	
Capital improvements project funding	Yes	
Authority to levy taxes for specific purposes	Yes	With voter approval
Fees for water, sewer, gas, or electric services	No	Privately Owned
Impact fees for new development	Yes	With City Council approval
Incur debt through general obligation bonds	Yes	With voter approval
Incur debt through special tax bonds	Yes	With voter approval
Incur debt through private activities	No	
Withhold spending in hazard prone areas	N/A	
Other	N/A	

6.4 FUNDING OPPORTUNITIES

The City of Lake Elsinore has the same funding opportunities as Riverside County Operational Area. Please refer to Section 7.4 and Table 7.4 of the Riverside County Multi-Jurisdictional Hazard Mitigation Plan for list of funding sources available.

6.5 MITIGATION OUTREACH AND PARTNERSHIPS

Lake Elsinore's Administrative Services Department handles finance and purchasing, city budgeting, risk management, information technology, and business licensing for the community. The department may be responsible for implementing mitigation actions related to the department's scope.

Lake Elsinore's Public Works Department is responsible for City-owned infrastructure, including streets, bike lanes and sidewalks, storm drains, traffic signals, and streetlights. Mitigation actions involving new or retrofitted public infrastructure, as well as those related to water conservation, fall within the purview of the Public Works Department.

The City of Lake Elsinore has been training residents and employees in the FEMA Community Emergency Response Team (CERT) training program since 2007 and has trained about 1000 residents in earthquake and disaster

response. The City of Lake Elsinore currently has over 10 active Citizen Corps members. The city also has purchased four (4) fully equipped CERT Response Trailers to assist with community response and recovery following a major earthquake, flood or other disaster.

It is planned to have Citizen Corps and CERT trained volunteers set up a command post at EOC to assist the Lake Elsinore Fire and Police responders with light fire suppression, light search & rescue, triage and first aid treatment of disaster victims. The City of Lake Elsinore participates with the Riverside County Fire Department and Office of Emergency Services to provide training and support to CERT volunteers. The use of CERT trained volunteers helps to mitigate the effects of a major earthquake, flood, fire, public health emergency, terrorism related event, or other community emergency.

Lake Elsinore Citizen Corps

Knowing that the risk of a disaster is real, the City of Lake Elsinore has implemented a new Citizen Corps program. A permanent Citizen Corps program can improve the chances of an orderly recovery following disasters of all kinds.

The Lake Elsinore Citizen Corps program is outlined in the Citizen Corps Framework which was approved by the Public Safety Advisory Commission and the City Council in 2008, and adds a new disaster volunteer element to the City's Emergency Preparedness Plan.

The City of Lake Elsinore web site contains first aid videos, PowerPoint Training, handouts, forms, booklets and a complete set of reference materials to assist with emergency preparedness and response information. We believe this is also a great mitigation step and plan for our future.

SECTION 7.0 - MITIGATION STRATEGIES

The City of Lake Elsinore coordinated with multiple cities and agencies throughout Riverside County to update of our LHMP Annex. The cooperation and discussions both in regional meetings, community outreach and in internal meetings allowed for both “big picture” and “local jurisdiction” views of mitigation need and possibilities.

The Part Two, Agency Inventory Worksheet provided a tool to recognize hazards and their severity and assisted in determining what mitigation actions are appropriate to lessen or prevent the hazard on a long-term basis.

7.1 GOALS AND OBJECTIVES

The City of Lake Elsinore General Plan reflects the City's long-range aspirations (20 years) of physical form and amenity and provides guidance for developmental regulations, such as zoning and subdivision ordinances. The plans goals support hazard mitigation as follows:

City of Lake Elsinore 2012 General Plan Update Hazard Mitigation Policy & Goals (HMP & G)

HMP&G 1: Air Quality Goals and Policies.

- ❖ **Goal 1.1a:** Continue to coordinate with the Air Quality Management District and the City's Building Department to reduce the amount of fugitive dust that is emitted into the atmosphere from unpaved areas, parking lots, and construction sites.

Policies:

1.1a.1 Implement a control plan for areas within the City that are prone to wind erosion of soil and take measures to prevent illegal off-highway vehicle use.

1.1a.2 Require vegetation stabilization for disturbed land including phased construction projects.

1.1a.3 Require construction equipment used for new developments to be properly maintained according to manufacturers' specifications.

1.1a.4 Restrict the idling of construction equipment to no longer than 10 minutes.

1.1a.5 Require equipment operators to use only diesel equipment or diesel vehicles with engines built in 1996 or later.

1.1a.6 Require the use of control measures for windborne emissions such as watering active construction areas, covering open stockpiles or vehicles hauling loose materials, and paving or applying non-toxic soil stabilizers on unpaved access roads and temporary parking areas.

1.1a.7 Continue to implement requirements identified in the National Pollutant Discharge Elimination System (NPDES).

♦ 5-YEAR PLAN:

- Seek grant opportunities to synchronize the City's traffic signals to reduce vehicle idling time and emissions.
- Install a natural gas fueling station within the City limits. Not completed, due to lack of funds

- Seek grant opportunities to replace fleet vehicles with alternative fuel vehicles such as natural gas.

NOT COMPLETED, DUE TO LACK OF FUNDS.

- ❖ **Goal 1.1.b:** Work with regional and state governments to develop effective mitigation measures to improve air quality.

Policies:

1.1b.1 Support the SCAQMD in its development of improved ambient air quality monitoring capabilities and establishment of standards, thresholds, and rules to address, and where necessary mitigate, the air quality impacts of new development.

1.1b.2 Work with the county and regional agencies to evaluate the feasibility of implementing a special fund and a system of charges (e.g., pollution charges, user fees, congestion pricing, and toll roads) that requires, where possible, individuals who undertake polluting activities to bear the economic cost of their actions.

1.1b.3 Promote programs that educate the public about regional air quality issues, opportunities, and solutions.

- ♦ **5-YEAR PLAN:**

- Review and update as required, City Ordinances to ensure compliance with state AQMD standards and to provide stringent penalties for violation of AQMD standards.

- ❖ **Goal 1.1c:** Reduce greenhouse gas emissions waste through improved management of waste handling and reductions in waste generation.

Policies:

1.1c.1 The City will improve emissions control at waste handling facilities, in the event such facilities are constructed within the City's jurisdiction.

1.1c.2 The City will implement enhanced programs to divert solid waste from landfill operations.

1.1c.3 The City will enhance regional coordination on waste management.

- ♦ **5-YEAR PLAN:**

- Coordinate promotion of recycling with the City's waste handler, CR&R.

HMP&G 2: Hazardous Materials Goals and Policies

- ❖ **Goal 2.1:** Reduce the level of risk associated with the use, transport, treatment, and disposal of hazardous materials to protect the community's safety, health, and natural resources.

Policies:

2.1.1 Continue to require hazardous waste generators to implement a waste reduction program per the Riverside County Hazardous Waste Management Plan with necessary inspections per the Riverside County Hazardous Materials Handlers Program.

2.1.2 Require any proposed development within proximity to an active and/or inactive landfill to complete a technical analysis that focuses on public safety and hazard issues. The analysis shall be prepared by a professional consultant.

2.1.3 Provide for the safe disposal of hazardous materials to protect the City against a hazardous materials incident.

2.1.4 Continue operating household hazardous waste education and collection programs in collaboration with the Riverside County Department of Environmental Health.

2.1.5 Evaluate new development on or adjacent to the Santa Ana Regional Interceptor (SARI) line requiring extensive subsurface components or containing sensitive land uses such as schools on a project-by-project basis to determine impacts if an accident occurs.

2.1.6 Comply with the Riverside County Underground Storage Tank Program and Health and Safety Code Sections 25280-25289 and ensure adequate leak detection, maintenance of records, and reporting of spills.

2.1.7 Require that all petroleum and gas pipelines are maintained by the owners. In the event of a leak, the City shall ensure that all responsible parties comply with the standards set by the California Department of Fish & Game Office of Spill Prevention and Response.

♦ **5-YEAR PLAN:**

- Expand monthly hazardous waste collection events to include all Riverside County residents.
- Establish a “Clean Extreme” program that involves the public in City wide cleanup efforts. Established with yearly events planned.
- Establish a watershed cleanup program made up of community volunteers to annually clean up areas adjacent to waterways. Not Completed

HMP&G 3: Wildfire Hazards Goals and Policies

- ❖ **Goal 3.1:** Adhere to an integrated approach to minimizing the threat of wildland fires to protect life and property using pre-fire management, suppression, and post-fire management.

Policies:

4.1 Require on-going brush clearance and establish low fuel landscaping policies to reduce combustible vegetation along the urban/wildland interface boundary.

4.2 Create fuel modification zones around development within high hazard areas by thinning or clearing combustible vegetation within 100 feet of buildings and structures. The fuel modification zone size may be altered with the addition of fuel resistant building techniques. The fuel modification zone may be replanted with fire-resistant material for aesthetics and erosion control.

4.3 Establish fire resistant building techniques for new development such as non-combustible wall surfacing materials, fire-retardant treated wood, heavy timber construction, glazing, enclosed materials and features, insulation without paper-facing, and automatic fire sprinklers. an education program to inform citizens about the threat of human wildfire origination from residential practices such as outdoor barbeques and from highway use such as cigarette littering.

4.4 Create emergency water supply procedures that allow for immediate access to existing reservoirs, tanks, and water wells for fire suppression.

4.5 Adhere to Chapter 7.1 of the Fire Code pursuant to adopted High Severity Zone Maps.

♦ **5-YEAR PLAN:**

- Secure funding to operate the City's Weed Abatement program on a year-round basis. Not completed due to lack of funds.

HMP&G 4: Flooding and Floodplains Goals and Policies

- ❖ **Goal 4.1:** Minimize the risk of injury to residents and visitors and of property damage due to flooding.

Policies:

4.1.1 Continue to ensure that new construction conforms to all applicable provisions of the National Flood Insurance Program to protect buildings and property from flooding.

4.1.2 Continue to encourage floodway setbacks for greenways, trails, and recreation opportunities.

4.1.3 Reduce the risk of flooding by creating floodway setbacks for greenways, trails, and recreation areas and by prohibiting development within the floodways.

4.1.4 Encourage that new developments within the floodplain fringe shall preserve and enhance existing native riparian habitat.

4.1.5 Continue to require the construction of channel improvements to allow conveyance of the 100-year flow without extensive flooding.

4.1.6 Use FEMA regulations and mapping to ensure that flooding hazards are evaluated during the environmental review process, including placement of restrictions on development within designated floodplain areas.

4.1.7 Promote drainage improvements that maintain a natural or semi-natural

floodplain.

4.1.8 Utilize the Capital Improvement Program for storm drainage projects and maintenance and improvement of local storm drain systems including channels, pipes, and inlets to ensure capacity for maximum runoff flows.

♦ **5-YEAR PLAN:**

- Install drainage improvements along Lakeshore to eliminate flooding in low lying areas.

Adopt and implement Master Drainage Plan update.

Secure funding assistance through Federal and/or State Grant opportunities to fund flood pre-hazard mitigation improvements.

Secure funding assistance through US Army Corps of Engineers for Levee improvements.

HMP&G 5: Seismic Activity Goals and Policies

- ❖ **Goal 5.1:** Minimize risk of loss of life, injury, property damage, and economic and social displacement due to seismic and geological hazards resulting from earthquakes and geological constraints.

Policies:

5.1.1 Continue to make every effort to reduce earthquake-induced fire as a threat.

5.1.2 Encourage programs to assist in the seismic upgrading of buildings to meet building and safety codes.

5.1.3 Identify the potential for ground shaking, liquefaction, slope failure, seismically induced landslides, expansion and settlement of soils, and other related geologic hazards for areas of new development in accordance with the Fault Rupture Hazard Overlay District adopted by the City of Lake Elsinore Zoning Code. The City may require site-specific remediation measures during permit review that may be implemented to minimize impacts in these areas.

- Seismic Retrofit City Hall and the Cultural Center. Completed

RELATED GOALS & POLICIES

The following Goal is closely related to those of this Element.

Public facilities and services that is adequate and convenient to all City residents.

- ❖ Goal HMP-1.1: Work with the Riverside County Fire Department to accurately forecast future needs and provide adequate and timely expansion of services and facilities.

- *Policy HMP-1.1a:* Maintain the Fire Facilities component of the Development Impact Fee to assure that new development pays its fair share of future fire stations.
- *Policy HMP-1.1b:* New development proposals shall continue to be routed to the Fire Department to assure that project access and design provide for maximum fire safety.
- ❖ Goal HMP-1.2: Accurately forecast future needs and provide adequate and timely expansion of services and facilities.
 - *Policy HMP-1.2a:* Maintain the Police Facilities component of the Development Impact Fee to assure that new development pays its fair share of future police facilities.
 - *Policy HMP-1.2b:* New development proposals shall continue to be routed to the Police Department to assure that project access and design provide for defensible space and maximum crime prevention.
- ❖ Goal HMP-1.3: Assure that community based policing and community programs to encourage resident participation are implemented to the greatest extent possible.
 - *Policy HMP-1.3a:* The Sheriff's office will assign a liaison to attend the Citizen Corps and Public Safety Advisory Committee meetings.
- ❖ Goal HMP-1.4: Maintain an emergency response program consistent with State law, and coordinate with surrounding cities, Riverside County and other emergency service providers.
 - *Policy HMP-1.4a:* Conduct review and update the Emergency Operations Plan to address the City's growth in population and built environment, as well as, new emergency response techniques.
 - *Policy HMP-1.4b:* Coordinate all emergency preparedness and response plans with neighboring cities, the County of Riverside, local health care providers and utility purveyors, and the California Emergency Management Agency (CalEMA).
 - *Policy HMP-1.4c:* Continue coordinated training for City Emergency Response Team members, Community Emergency Response Team (CERT) volunteers, and related response agency personnel.
- ❖ Goal HMP-1.5: Ensure that Critical facilities such as police and fire stations, hospitals and clinics, schools and utility substations are sited away from

identified hazard areas.

- *Policy HMP-1.5a:* Review and amend as appropriate development regulations to ensure critical facilities are not located in an area identified in the General Plan as a hazard area.
- ❖ Goal HMP-1.6: Conduct public outreach to provide education programs and literature to its residents, business people and property owners on earthquake preparedness, fire safety, flooding hazards and other emergencies.
 - *Policy HMP-16a:* The Emergency Services Division will maintain emergency preparedness information and handouts at City Hall, the Senior Center and Library, and be distributed at community events. Additionally, the City's website and other media resources shall be utilized to inform and educate residents and business owners on emergency preparedness matters.
 - *Policy HMP-1.6b:* The Emergency Services Division will continue to coordinate training for Community Emergency Response Team (CERT) volunteers, and publicize training sessions to the City's residents and business owners.

7.2 MITIGATION ACTIONS

The City of Lake Elsinore has identified capital improvement projects to address floods and earthquakes. Please refer to Section 3.4 Mitigation Update Table.

7.3 ON-GOING MITIGATION STRATEGY PROGRAMS

The City of Lake Elsinore is focusing on mitigation actions for its high priority hazards which are air quality, wildland fire, hazardous materials, earthquake, landslide and other slope stability hazards, and flooding. These hazards happen more often than others and do cause a significant amount of damage to city's infrastructure and the community.

Air Quality:

- Implement a control plan for areas within the City that are prone to wind erosion of soil and take measures to prevent illegal off-highway vehicle use.
- Require vegetation stabilization for disturbed land including phased construction projects.
- Require construction equipment used for new developments to be properly maintained according to manufacturers' specifications.
- Require the use of control measures for windborne emissions such as

watering active construction areas, covering open stockpiles or vehicles hauling loose materials, and paving or applying non-toxic soil stabilizers on unpaved access roads and temporary parking areas. Continue to implement requirements identified in the National Pollutant Discharge Elimination System (NPDES).

- Support the SCAQMD in its development of improved ambient air quality monitoring capabilities and establishment of standards, thresholds, and rules to address, and where necessary mitigate, the air quality impacts of new development.
- Work with the county and regional agencies to evaluate the feasibility of implementing a special fund and a system of charges (e.g., pollution charges, user fees, congestion pricing, and toll roads) that requires, where possible, individuals who undertake polluting activities to bear the economic cost of their actions.
- Promote programs that educate the public about regional air quality issues, opportunities, and solutions.
- The City will improve emissions control at waste handling facilities, in the event such facilities are constructed within the City's jurisdiction.
- The City will implement enhanced programs to divert solid waste from landfill operations.
- The City will enhance regional coordination on waste management.

Hazardous Materials:

- Continue to require hazardous waste generators to implement a waste reduction program per the Riverside County Hazardous Waste Management Plan with necessary inspections per the Riverside County Hazardous Materials Handlers Program.
- Require any proposed development within proximity to an active and/or inactive landfill to complete a technical analysis that focuses on public safety and hazard issues. The analysis shall be prepared by a professional consultant.
- Provide for the safe disposal of hazardous materials to protect the City against a hazardous materials incident.
- Continue operating household hazardous waste education and collection programs in collaboration with the Riverside County Department of Environmental Health.
- Evaluate new development on or adjacent to the Santa Ana Regional Interceptor (SARI) line requiring extensive subsurface components or

containing sensitive land uses such as schools on a project-by-project basis to determine impacts if an accident occurs.

- Comply with the Riverside County Underground Storage Tank Program and Health and Safety Code Sections 25280-25289 and ensure adequate leak detection, maintenance of records, and reporting of spills.
- Require that all petroleum and gas pipelines are maintained by the owners. In the event of a leak, the City shall ensure that all responsible parties comply with the standards set by the California Department of Fish & Game Office of Spill Prevention and Response.

Wildfire Hazards:

- Require on-going brush clearance and establish low fuel landscaping policies to reduce combustible vegetation along the urban/wildland interface boundary.
- Create fuel modification zones around development within high hazard areas by thinning or clearing combustible vegetation within 100 feet of buildings and structures. The fuel modification zone size may be altered with the addition of fuel resistant building techniques. The fuel modification zone may be replanted with fire-resistant material for aesthetics and erosion control.
- Establish fire resistant building techniques for new development such as non-combustible wall surfacing materials, fire-retardant treated wood, heavy timber construction, glazing, enclosed materials and features, insulation without paper-facing and automatic fire sprinklers.
- Establish an education program to inform citizens about the threat of human wildfire origination from residential practices such as outdoor barbeques and from highway use such as cigarette littering.
- Create emergency water supply procedures that allow for immediate access to existing reservoirs, tanks, and water wells for fire suppression.
- Adhere to Chapter 7.1 of the Fire Code pursuant to adopted High Severity Zone Maps.
- Condition project to comply with Fire Department requirements, and work with the California Department of Forestry and the County Fire Department supporting public fire education and prevention programs.
- Implement an education program to inform citizens about the threat of human wildfire origination from residential practices such as outdoor barbeques and from highway use such as cigarette littering

Flooding Hazards:

- Ensure that new construction conforms to all applicable provisions of the National Flood Insurance Program to protect buildings and property from flooding.
- Encourage floodway setbacks for greenways, trails, and recreation opportunities.
- Create floodway setbacks for greenways, trails, and recreation areas and by prohibiting development within the floodways.
- Require new developments within the floodplain fringe preserve and enhance existing native riparian habitat.
- Require the construction of channel improvements to allow conveyance of the 100-year flow without extensive flooding.
- Use FEMA regulations and mapping to ensure that flooding hazards are evaluated during the environmental review process, including placement of restrictions on development within designated floodplain areas.
- Promote drainage improvements that maintain a natural or semi-natural floodplain.
- Utilize the Capital Improvement Program for storm drainage projects and maintenance and improvement of local storm drain systems including channels, pipes, and inlets to ensure capacity for maximum runoff flows.
- Through the project review and the CEQA processes the City shall assess new development and reuse applications for potential flood hazards, and shall require compliance with FEMA Special Flood Hazard Areas where appropriate.
- Use FEMA regulations and mapping to ensure that flooding hazards are evaluated during the environmental review process, including placement of restrictions on development within designated floodplain areas.

Seismic Activity:

- Continue to make every effort to reduce earthquake-induced fire as a threat.
- Seek out and promote programs to assist in the seismic upgrading of buildings to meet building and safety codes.
- Identify the potential for ground shaking, liquefaction, slope failure, seismically induced landslides, expansion and settlement of soils, and other related geologic hazards for areas of new development in accordance with the Fault Rupture Hazard Overlay District adopted by the City of Lake Elsinore Zoning Code. Require site-specific remediation measures during permit review that shall be implemented to minimize impacts in these areas.
- The City recognizes the importance of addressing secondary seismic hazards,

and has delineated areas of known and suspected liquefaction hazard. In general, liquefaction susceptibility ranges from very low in the former lake footprint to moderate on much of the remainder of the valley floor and very high in the valley floor corridor formerly occupied by the axial riverine drainage. Liquefaction potential is also very high along the area's principal tributary drainages and on portions of the alluvial fans on the valley's eastern margin.

- The City applied for and received a FEMA grant to reinforce the City Hall and Cultural Center buildings; retrofit completed in 2012.

Landslide and Other Slope Stability Hazards:

- The State of California has not yet issued seismic hazards maps for the Lake Elsinore Area. Upon completion, these maps will be required to delineate areas at risk from seismically induced landslides. A substantial proportion of the City, SOI, and surrounding area are located on slopes of 25%–35% or steeper, and much of the area is at substantial risk of seismically induced slope failure.

7.4 FUTURE MITIGATION STRATEGIES

The City of Lake Elsinore's mitigation goals and objectives include the following:

- Local Jurisdiction Mitigation Strategies and Goals
- The City of Lake Elsinore mitigation planning group has created a list of Mitigation Strategies and Goals for the community hazards identified to include the following:
- Actively pursue to completion the mitigation policies and strategies contained in the Lake Elsinore General Plan.
- Synchronize traffic signals throughout the City to minimize traffic congestion and associated vehicle emissions.
- Pursue natural gas vehicle fueling station within the City limits.
- Replace older fleet vehicles with alternative fuel vehicles when feasible and when not possible replace with vehicles that meet or exceed current emission standards.
- Continue to train Emergency Operations Center and general city staff in our Emergency Operations Plan and the California Standardized Emergency Management System (SEMS), the National Incident Management System (NIMS), and the Incident Command System (ICS).
- Continue to train and educate the public and business community in Lake Elsinore CERT and Lake Elsinore PREP to increase the percentage of our population that is prepared and ready to respond to any emergency and

stabilize their neighborhoods and business neighborhoods to assist the first responders by minimizing the effects of any emergency incident.

- Enlist the support of Church, Civic, Business, and Community Groups including Homeowners Associations to support and promote CERT, Citizen Corps and individual preparedness in the City.

SECTION 8.0 - PLAN IMPLEMENTATION AND MAINTENANCE PROCESS

The Lake Elsinore Municipal Code provides for mitigation of the hazards identified in the LHMP and an emergency response and disaster relief plan in the event of an emergency. The following codes include:

- Chapter 8.20 BURNING AND FIRE HAZARDS
- Chapter 15.56 UNIFORM FIRE CODE
- Chapter 15.04 BUILDING CODE
- Chapter 17.36 (HPD) HILLSIDE PLANNED DEVELOPMENT OVERLAY DISTRICT
- Chapter 2.20 DISASTER RELIEF
- Chapter 8.32 WEED AND RUBBISH ABATEMENT
- Chapter 8.18 NUISANCE ABATEMENT
- Chapter 14.08 STORMWATER/URBAN RUNOFF MANAGEMENT AND DISCHARGE CONTROLS
- Chapter 14.04 SURFACE MINING AND RECLAMATION
- Chapter 15.64 FLOOD DAMAGE PREVENTION
- Chapter 15.68 FLOODPLAIN MANAGEMENT
- Chapter 16.48 DRAINAGE IMPROVEMENTS
- Chapter 2.48 PERSONNEL

The City Municipal Code takes cues from state and federal regulations as well as historical events in the City in promulgating regulations and guidance. As new regulations are passed at the state and federal level, Department staff aware of the new requirements drafts updates to the Lake Elsinore Municipal Code for City Council approval. Changes and ordinances are presented before City Council by way of a public hearing during which comments are sought, considered and recommendations made.

The City of Lake Elsinore also incorporated their 2012 LHMP with the same efforts as their 2017 LHMP by integrating it into the Lake Elsinore Municipal Code.

The City of Lake Elsinore Public Works Division will oversee the LHMP. In coordination with other City Departments, we will monitor and evaluate our LHMP on an ongoing and annual basis for the 5-year cycle required.

On an ongoing basis, the following will be considered:

- Funding source opportunities to include grants.
- New development entitlement and construction that provide opportunity for improvements to infrastructure and communication. Population growth,
- demographics, and build-out patterns.
- Opportunities for hazard mitigation through interagency cooperative agreements.

The annual review will assess whether:

- The goals and objectives are relevant to current and expected conditions.
- Risks identified have changed or new types have been identified.
- The current resources are appropriate for implementing the plan.
- There are implementation problems, such as technical, political, legal, or coordination issues with other agencies.
- The outcomes have occurred as expected (a demonstration of progress).
- The agencies and other partners participated as originally proposed.

If we discover changes have occurred during the evaluation, we will update the LHMP revision page and notify EMD to update our Annex.

Lake Elsinore will follow the process in Section 9.0 of the Riverside County Multi-Jurisdictional Hazard Mitigation Plan for maintenance schedule.

SECTION 9.0 - CONTINUED PUBLIC INVOLVEMENT

The City proposes to utilize a variety of methods to involve the public in the ongoing and annual review of the LHMP.

The City of Lake Elsinore considers its residents its most valuable resource. The City has actively worked to establish a strong, active, Certified Emergency Response Team (CERT) program which provides for trained first responders, and the Lake Elsinore Citizen Corps program adds a new disaster volunteer element to the City's Emergency Preparedness Plan.

The Citizen Corps members are located throughout the City. They are trained in first response and communications. They supplement the City's emergency response staff in emergency situations.

The Citizen Corps is self-governed and meets bi-monthly. City staff from the Public Works Department, Fire; and the Public Safety and Advisory Commission (PSAC) attend and participate in the meetings.

The Public Safety Advisory Commission (PSAC) has a significant role in the City. The PSAC is a conduit of information from residents and businesses to their Public Safety, Code Enforcement and Emergency Service providers. They:

- Act as independent "eyes and ears" to augment staff efforts to protect and serve the public;
- Communicate through the City's Web site, printed information and community outreach;
- Seek community feedback and input from various community organizations, such as the Lake Elsinore Marine Search & Rescue (LEMSAR), Neighborhood Watch Groups, the Lake Elsinore Chamber of Commerce, Downtown Merchants Organization, Homeowners Associations, Neighborhood Watch groups, and others;
- Submit Public Safety recommendations to the City Council for consideration and report to the City Council in a regular basis;
- Assist the City with Disaster Preparedness and Crisis Management;
- Evaluate the cost and merits of creating a Lake Elsinore Citizen Corps;
- Seek grant funding for public safety related programs;
- Assist the community in solving local traffic safety concerns.

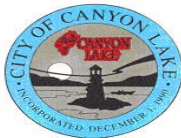
The ongoing and annual review of the LHMP will be assisted through public input received by the PSAC. Please see Appendix B for update to the General Plan.

Approval of any changes to the LHMP will be sought by City Council in a public hearing format providing the citizens of Lake Elsinore with the opportunity to comment prior to approval.

APPENDIX A – MEETINGS AND PUBLIC OUTREACH

Figure A-1 – Meeting and Flyer Agenda – May 16, 2017

510 1,(e),(g)



Southwest Committee Meeting **May 16, 2017** **Murrieta Fire Station 4** **28155 Baxter Rd., Murrieta** **0900 - 1100**

Pledge of Allegiance & self-introductions:	EMD
Presentations:	Riverside County Sheriff Department H.O.T. (Homeless Outreach Team)
Upcoming Events (WEBEOC Drill, SW TTX)	EMD
Local Hazard Mitigation Plan Discussion	The following cities will be presenting their LHMP for questions and public comment: Temecula, Wildomar, Lake Elsinore, Canyon Lake, Perris and the Riverside County Office of Education
Next meeting date:	June 20, 2017

Note: If you cannot attend, please send an alternate to represent your organization so they can share the meeting information. Our goal is to provide applicable information to our SW Comm. members. Please remember to bring business cards to exchange with other attendees.

Figure A-2 – Meeting Roster – May 16, 2017

Southwest Committee Meeting

May 16, 2017

Name	E-Mail (Changes only)	Company	Initials
Aveling, Matt			
Barnett, Kirk			
Bill Herder			
Bill Moorhead			
Bob Hagel			
Bridgette Moore			
Brown, Jason			
Burch, Chris			
Casady, Brad			
DAKIN, SEAN			
D'Amico, Michael		RICE	MD
Dan Lincoln -Lamb Fellowship			
Dan Sitar RN, BSN, MICN			
Dave Morrison			
David Martinez			
David Pyle			
Day, Dennis		Riv Co EMS	DD
Debbie Jones			
Don & Maureen Slumpff			
Don Hammers			
Don Lewis			D/L
Douglas, David			
Dr. Gregory J. Bowers, eaglewoman@verizon.net			
Garcia, Robert			
George Taylor - SW RACES			GT
Georgina Hernandez - FFF Enterprises			
Glenn Osborne -RACES			GO
Glynn, Steven			
Harris, Alex			
Hatfield, Michael			
Hayes, Matthew			
Hefley, Douglas - EMWD			

Martinez, Cris			
Mary Zilliox			
Maureen Jump			
Michael & Vicki Ghafouri			
Michael Doblado			
Mike Borja			
MMCLL			
Monique Middleton			
Nico Lievense			
Norma Fagan			
O'Neal, Vincent			
Paul Bakeman	K16RIV@GMAIL.COM		RB
Paul Sautter			
Pemberton, Geoff			
Perdue, Robert			
Phillips, Todd			
Rick DeSantiago - City of Lake Elsinore			
Robert Holmes - De Luz CSD			
Robert Martinez - City ESC			
Robert Martinez - PCC	PCC Robert Martinez@gmail.com Pacific Code Compliance		RM
Roberto Cardenas - City of Temecula	Roberto.Cardenas@temecula.gov CITY of Temecula		RB
Robin Christopherson			
Ron New			
Rosann Orewyler			
Sarah Meyer, CIH, CSP			
Serrano, Diana			
Stephanie Johnson - Santa Rosa West			
Stephens, John			
Steven Lloyd			
Susan Frommer - Tenaja			
Temecula Valley			
Terri Aylward			
Tim Crowder			
Todd Voigts KJ6DGG			

Heiner, Phillip			
Hongkham, Scott			
Irene Powell - TCC			
James Brown			<i>JP</i>
James Grimm			
Janice Powers			<i>JP</i>
Jason Briley			
Jeff Simmons			
Jeff Walter			
Jeremy Goldman			
Jim Begins - CAP			
John Manhard			
Joseph Ruvalcaba	<i>Joseph.L.Ruvalcaba@cap.dhs.gov</i>	<i>U.S.B.P.</i>	<i>JRR</i>
Judy Miller - PUHSD			
Karen Parris			
Karl Gronbach			
Keeling, Jason			
Keith Velotta - MUSD			
Kelly, Stacie E			
Kerr, Dawn			
Kim Cousins			
Kristen Frankforter			
Kurylowicz, David			
Lane, Randon K			
Larry Greene	<i>/</i>	<i>City of Long Beach</i>	<i>RBY</i>
Larry Jaspersen - La Cresta Highlands			
Leigh Lockwood			
Les Chapman - City of Wildomar			<i>LC</i>
Linda Cepress			
Linda Sanford			
Lorraine Strong - TIP			
Malouf, Matt			
Mark Utley			
Martinez, Aaron			

LAKE ELSINORE – ANNEX
LOCAL HAZARD MITIGATION PLAN
JUNE 2017

APPENDIX B - UPDATE TO GENERAL PLAN

Figure B-1



REPORT TO PLANNING COMMISSION

TO: HONORABLE CHAIRMAN
AND MEMBERS OF THE PLANNING COMMISSION

FROM: WARREN MORELION, AICP
PLANNING MANAGER

DATE: NOVEMBER 15, 2011

SUBJECT: 2011 COMPREHENSIVE UPDATE OF THE CITY GENERAL PLAN
AND RELATED DOCUMENTS

Project Description

General Plan Update

California Government Code Section 65300 *et seq.* requires each city and county to adopt a comprehensive, long-term general plan, which must cover the jurisdiction's entire planning area and address the broad range of issues associated with its future development. The 2011 Comprehensive General Plan Update will replace the existing 1990 Plan, change the format by the identification of sixteen (16) unique District Plans that are specific and geographically defined, and by organizing baseline conditions and the establishment of goals, policies and implementation programs into three (3) major Plan chapters: Community Form, Public Safety and Welfare, and Resource Protection and Preservation.

Housing Element Update

The Housing Element is one of the seven (7) mandatory elements of the General Plan. Through its policies, procedures, and incentives, the updated Housing Element will provide an action plan for maintaining and expanding the housing supply for all income levels in the City for the period of July 1, 2008 to June 30, 2014.

Downtown Master Plan, "Key to Downtown" Implementation Plan, and Downtown Code

The Downtown Master Plan is intended to set the vision of the downtown area. The Master Plan area is bounded by Interstate 15 to the north, the Lake waters to the south,

Figure B-2

Comprehensive Update to the City General Plan

November 15, 2011

Page 2 of 6

and Riley Street to the west, and Ellis, Chestnut, Bridge, and Olive Streets to the east, as shown in Exhibit 'A.' The Master Plan seeks to preserve historic assets within the downtown while evolving a vision and character of a "City of its Time." The Master Plan also focuses on implementation and incentives, land uses and codes, in order that this vision can come to fruition quickly and efficiently.

Climate Action Plan

The Climate Action Plan (CAP) is a long-range plan to reduce local greenhouse gas (GHG) emissions that contribute to climate change. The CAP identifies activities in the City that generate (GHG) emissions, quantifies these emissions, and projects future trends. Additionally, the CAP provides targets for the years 2020 and 2030, and strategies and measures that ensure that the City meets the State's emissions reduction mandates (AB 32 and Executive Order S-3-05). Lastly, as requested by members of the City's development community, the CAP includes a "Project-Level CAP Consistency Worksheet" within its Appendices, to assist an applicant in meeting California Environmental Quality Act (CEQA) requirements by demonstrating a project's consistency with the City's General Plan.

Chronology

2005 – 2007

The City adopted its existing General Plan on November 27, 1990. Work on an updated General Plan began in January, 2005, with the formation and active participation of the General Plan Advisory Committee (GPAC) comprised of local residents and business owners. The GPAC met regularly a total of fourteen (14) times, providing crucial citizen input for the Plan formation. A visioning session held at the Diamond Stadium, three neighborhood workshops, a joint City Council/Planning Commission/GPAC study session, a focused survey, and public hearings were conducted. A Draft Environmental Impact Report (DEIR) was prepared and circulated in December, 2007.

2008 - 2009

Several hearings occurred in 2008 before both the Planning Commission and City Council, resulting in substantive changes to the proposed General Plan Land Use Map and modifications to the goals within the General Plan text. The City Council directed Staff to make specific land use changes throughout the City. These changes necessitated the preparation of a revised DEIR, including an updated Traffic Impact Analysis.

Meanwhile, the Downtown Master Plan project was initiated with a consensus-building workshop on December 6, 2008. The City also sought approval by the State Department of Housing and Community Development of the City's Draft Housing Element Update, submitted in 2009. This process was stymied by the State's lack of confidence that the City could realistically meet its Regional Housing Needs Allocation.

Figure B-3

Comprehensive Update to the City General Plan

November 15, 2011

Page 3 of 6

Lastly, the City was a recipient of a federal Energy Efficiency and Conservation Block Grant in 2009 which allowed us to embark on the preparation of a Climate Action Plan to address greenhouse gas emission reduction requirements from the State.

2010 – 2011

A concerted effort by department staff from Planning, Geographic Information Systems, and Engineering completed the work begun by consultants to ensure consistency between all documents completed by outside consultants. The project progressed despite budget cuts and the loss of key personnel that occurred during this time period. In-house staff also completed the revised and recirculated environmental documents.

Discussion & Analysis

Significant Changes to the Dec 2009 Draft GPU

Since the printing of the December 2009 General Plan Update, Staff completed the following tasks, at the request of the City Council, interested agencies, the development community, and property owners:

1. Streamlined the Goals, Policies and Implementation Programs.
2. Appendices added to provide pertinent information to facilitate development.
3. Land Use acreages recomputed as gross acres, and used throughout all accompanying documents.
4. Southeast Sphere District was removed as a result of the incorporation of the City of Wildomar and related boundary refinements effected by the Riverside County Local Agency Formation Commission ("LAFCO").
5. Alternative Land Use Maps were removed from the General Plan document and incorporated in the alternative analysis of the RDP-EIR.
6. Mineral Resources section added to Chapter 4; Housing section expanded in Chapter 2.
7. Roadway Classifications were updated based on Revised Traffic Impact Analysis.
8. Residential Mixed Use and Commercial Mixed Use descriptions were refined for clarity in lieu of an update to the Zoning Code.
9. Properties under ownership of the Regional Conservation Agency were redesignated as Open Space.

Errata Changes to the 2011 Draft General Plan Update

The following changes are included in the Errata Sheet for the GPU (See Exhibit 'B') as a result of comments received during the recirculation of the DEIR:

1. Parks & Recreation information and Open Space information have been updated at the request of Civic Partners and McMillian Summerly, LLC, in a

Figure B-4

Comprehensive Update to the City General Plan
November 15, 2011
Page 4 of 6

letter dated October 21, 2011 from RGP (Letter is in the Response to Comments section of the Final RP-EIR).

2. Cultural Resources Goals, Policies and Implementation Programs have been modified at the request of the Pechanga Tribe, in a letter dated October 19, 2011 (Letter is in the Response to Comments section of the Final RP-EIR).
3. Trails, hillside grading standards, and improvements to roadway connections to adjacent jurisdictions have been modified or added at the request of the City of Canyon Lake. Their letter, dated November 3, 2011, making such requests is attached to this Staff Report as Exhibit 'C.'
4. In a letter dated November 9, 2011, Carleton Waters of Urban Crossroads, re-analyzed their Traffic Impact Analysis and modified their recommended roadway classifications for two relatively minor "loop" roadways located west of Lincoln Street and south of the Interstate 15 Freeway. Their letter, dated November 9, 2011, is attached to this Staff Report as Exhibit 'D.'

Errata Changes to the Draft Housing Element Update

On November 1, 2011, the Department of Housing and Community Development (HCD) issued a letter to the City (See Exhibit 'E'), indicating that the Draft Housing Element as revised at the request of HCD "addresses the statutory requirements" and "demonstrates adequate sites to accommodate the City's regional housing need."

The requested revisions to Pages 130 through 133 of the Draft Housing Element is an attachment to this Staff Report and comprises the Errata Sheet for the Draft Housing Element Update (See Exhibit 'F').

Correspondence

Staff received a letter of support from Mr. Paul Reichert, of 3 Point Properties, Inc., dated October 25, 2011, in which he "strongly encourage(s) the Planning Commission to make its recommendation to the City Council ..." (See Exhibit 'G').

Staff also received a letter from Marinita Development Company dated November 8, 2011, thanking the City and Staff "for the exceptionally good job" on the General Plan Update (See Exhibit 'H'). Marinita also makes three requests to change the General Plan and Program EIR. Unfortunately, the request to change the Program EIR was not received during the 45-day recirculation comment period which ended October 21, 2011, and could not be considered in the Response to Comments. Staff did not have sufficient time to research and respond to these requests before the printing of this Staff Report. However, Staff will present their analysis for discussion with the Commission at the public hearing.

Figure B-5

Comprehensive Update to the City General Plan
November 15, 2011
Page 5 of 6

Environmental Determination

The City circulated a Draft Program Environmental Impact Report with approximately 180 individual comments received during the 45-day comment period from December 5, 2007 to January 18, 2008. Comments were reviewed and considered for incorporation during the revision process necessitated by the substantial changes to the land use plan during the first round of public hearings. A Recirculated Draft Program EIR ("RDP-EIR") was circulated for another 45-day comment period from September 7, 2011 to October 21, 2011. A total of twenty (20) comment letters were received, reviewed, considered and responses prepared. Responses to the comments are provided to the Commission in the Final Recirculated Program EIR document.

Annexation No. 81

The revised RDP-EIR includes an analysis of the proposed Annexation No. 81, known as the "3rd Street Annexation," pending before the Local Agency Formation Commission. The Annexation is City-initiated and its processing will continue to completion following the City's adoption of the General Plan Update Land Use Map designating the proposed land use densities and intensities within the Annexation area and certification of the Final RP-EIR.

Findings and Statement of Overriding Considerations

The RP-EIR determined that the proposed project, as described above, will have no potentially significant impacts upon Greenhouse Gas Emissions, Mineral Resources, Population and Housing and Utilities and Service Systems and no mitigation measures beyond the goals, policies and implementation programs identified in the proposed General Plan Update are required for these issue areas. Additionally, the RP-EIR determined that potentially significant environmental impacts upon Aesthetics, Biological Resources, Cultural and Paleontological Resources, Geology and Soils, Hazards and Hazardous Materials, Hydrology and Water Quality, Land Use & Planning (including Agricultural Resources), Parks and Recreation and Public Services will be mitigated to below a level of significance through compliance with the goals, policies and implementation programs identified in the proposed General Plan Update and compliance with the identified mitigation measures.

However, the RP-EIR also determined that the proposed project will have significant and unavoidable project-level and cumulative impacts related to Air Quality, Noise and Transportation and Circulation, which cannot be mitigated to below a level of significance. Therefore, a Statement of Overriding Considerations has been prepared and is included in the Findings of Fact, which are a separately bound document that is incorporated by reference into the Planning Commission resolution recommending certification of the RP-EIR.

PC November 15, 2011 Item No. 2
Page 5 of 33

Figure B-6

Comprehensive Update to the City General Plan
November 15, 2011
Page 6 of 6

Recommendation

Staff recommends that the Planning Commission take the following actions:

1. Recommend to the City Council certification of the Recirculated Program Environmental Impact Report, Findings of Fact and Statement of Overriding Considerations, and the Mitigation Monitoring and Reporting Program.
2. Recommend to the City Council approval of the General Plan Update, Downtown Master Plan, Key to Downtown Implementation Plan, Downtown Code, and Housing Element Update.

Prepared by: Carole K. Donahoe, AICP *CKD*
Project Planner

Approved by: Warren Morelion, AICP *WM*
Planning Manager

Attachments:

1. Exhibit 'A' – Downtown Master Plan Map
2. Exhibit 'B' – Errata Changes to the 2011 General Plan Update, November 15, 2011.
3. Exhibit 'C' – Correspondence from the City of Canyon Lake, dated November 3, 2011, requesting changes to the General Plan Update.
4. Exhibit 'D' – Correspondence from Urban Crossroads, dated November 9, 2011, recommending the modification of two roadway classifications.
5. Exhibit 'E' – Correspondence from the State of California Department of Housing & Community Development, dated November 1, 2011, certifying compliance with State housing element law.
6. Exhibit 'F' – Errata Sheet for the Draft Housing Element Update, titled "City of Lake Elsinore Housing Element Technical Assistance September 2011," which revises Pages 130 thru 133.
7. Exhibit 'G' – Correspondence from Paul Reichert, Three Point Properties, Inc., dated October 25, 2011.
8. Exhibit 'H' – Correspondence from J. Scott Fawcett, Marinita Development Company, dated November 8, 2011.
9. Resolution No. PC-2011-___ recommending that the City Council certify the Recirculated Program Environmental Impact Report for the General Plan Update, Housing Element Update, Downtown Master Plan, Key to Downtown Implementation Plan, Downtown Code, and Annexation No. 81
 - a. Environmental Findings and Statement of Overriding Considerations regarding the Recirculated Program Environmental Impact Report for the City of Lake Elsinore General Plan Update
(Distributed under Separate Cover).
10. Resolution No. PC-2011-___ recommending that the City Council approve the 2011 Comprehensive Update of the General Plan, which includes the Housing Element Update, the Downtown Master Plan, Key to Downtown Implementation Plan and Downtown Code.

PC November 15, 2011 Item No. 2
Page 6 of 33

APPENDIX C - CAPITAL IMPROVEMENT PROGRAM

Figure C-1 – Project Listing Total Cost

City of Lake Elsinore Capital Improvement Projects-Proposed Project Listing Total Cost Inception to Date to FY 2014-15			
<u>Status</u>	<u>Project #</u>	<u>Project Name</u>	<u>Total Project Total</u>
Drainage			
Proposed	4357	Lakeshore-Between Riverside & Chaney	100,000
General City			
Proposed	4354	Cultural Ctr PEG Broadcast Tech Upgrades	60,000
Proposed	4355	Emergency Operation Center Capital Furnishings	20,000
Proposed	Gen-0057	Sungard H.T.E. Human Resources Module	22,950
			102,950
Park and Recreation			
Proposed	PRK-0018	McVicker Park Play Equipment Replacement	130,000
Street Improvement			
Proposed	4349	Sumner & Heald Pavement Rehabilitation	728,143
Proposed	4350	Gunnerson Rehabilitation	450,000
Proposed	4353	Railroad Cyn Rd Slope Protection Fence Repair	250,000
Proposed	4356	Bicycle & Pedestrian Improvements-Riverside Dr	207,000
Proposed	4358	Ingall Circle Slope Repair	37,500
Proposed	4359	Lakeview Slope Repair	37,500
Proposed	PMP11	Pavement Management Program 2011	2,125,000
			3,835,143
Traffic			
Proposed	4351	Macy & Grand Signal	250,000
GRAND TOTAL			4,418,093

Figure C-2 – Project by Funding Source

<p style="text-align: center;">City of Lake Elsinore, California CAPITAL IMPROVEMENT PROJECTS-PROPOSED FY '11 thru FY '15 PROJECTS BY FUNDING SOURCE</p>								
Source	Project#	Priority	FY '11	FY '12	FY '13	FY '14	FY '15	Total
105 Misc								
Emergency Operation Center Capital Furnishings	4355	n/a	20,000					20,000
Sungard H.T.E. Human Resources Module	Gen-0057	n/a	22,950					22,950
105 Misc Total			42,950					42,950
108 Prop 1B								
Sumner & Heald Pavement Rehabilitation	4349	n/a	708,143					708,143
108 Prop 1B Total			708,143					708,143
108 Verizon PEG								
Cultural Ctr PEG Broadcast Tech Upgrades	4354	n/a	60,000					60,000
108 Verizon PEG Total			60,000					60,000
110 Prop 42								
Sumner & Heald Pavement Rehabilitation	4349	n/a	20,000					20,000
Gunnerson Rehabilitation	4350	n/a	45,000	250,000				295,000
Macy & Grand Signal	4351	n/a	250,000					250,000
110 Prop 42 Total			315,000	250,000				565,000
112 Measure A								
Bicycle & Pedestrian Improvements-Riverside Dr	4356	n/a	103,500					103,500
Lakeshore-Between Riverside & Chaney	4357	n/a	100,000					100,000
Ingall Circle Slope Repair	4358	n/a	37,500					37,500
Lakeview Slope Repair	4359	n/a	37,500					37,500
Pavement Management Program 2011	PMP11	n/a	282,000	374,000	456,000	487,000	526,000	2,125,000
112 Measure A Total			560,500	374,000	456,000	487,000	526,000	2,403,500
112 SB-821								
Bicycle & Pedestrian Improvements-Riverside Dr	4356	n/a	103,500					103,500
112 SB-821 Total			103,500					103,500
221 Parks								
McVicker Park Play Equipment Replacement	4360	n/a	130,000					130,000
221 Parks Total			130,000					130,000

Source	Project#	Priority	FY '11	FY '12	FY '13	FY '14	FY '15	Total
254 Railroad Canyon Road Benefit								
Railroad Cyn Rd Slope Protection Fence Repair	4353	n/a	130,000					130,000
254 Railroad Canyon Road Benefit Total			130,000					130,000
Unfunded								
Gunnerson Rehabilitation	4350	n/a		155,000				155,000
Railroad Cyn Rd Slope Protection Fence Repair	4353	n/a		120,000				120,000
Unfunded Total				275,000				275,000
GRAND TOTAL			2,050,093	899,000	456,000	487,000	526,000	4,418,093

Figure C-3 – Project Cost Estimates

CAPITAL PROJECTS-PROPOSED		FY '11 <i>thru</i> FY '15																																																															
City of Lake Elsinore, California		Department Drainage Contact Public Works Director Type Maintenance Useful Life Category Storm Sewer/Drainage Priority n/a Status Proposed																																																															
<div style="border: 1px solid black; padding: 5px;"> Project # 4357 Project Name Lakeshore-Between Riverside & Chaney Account # U.DRN.0008 </div>																																																																	
<div style="border: 1px solid black; padding: 5px;"> Description Roadway drainage Lakeshore-Between Riverside & Chaney </div>		Total Project Cost: \$100,000																																																															
<div style="border: 1px solid black; padding: 5px;"> Justification </div>																																																																	
<table border="0" style="width: 100%; border-collapse: collapse;"> <tr> <th style="text-align: left;">Expenditures</th> <th style="text-align: right;">FY '11</th> <th style="text-align: right;">FY '12</th> <th style="text-align: right;">FY '13</th> <th style="text-align: right;">FY '14</th> <th style="text-align: right;">FY '15</th> <th style="text-align: right;">Total</th> </tr> <tr> <td>Planning/Design</td> <td style="text-align: right;">15,000</td> <td></td> <td></td> <td></td> <td></td> <td style="text-align: right;">15,000</td> </tr> <tr> <td>Constructn Cost other than Bldg</td> <td style="text-align: right;">70,000</td> <td></td> <td></td> <td></td> <td></td> <td style="text-align: right;">70,000</td> </tr> <tr> <td>Professional, Tec & Other Svcs</td> <td style="text-align: right;">5,000</td> <td></td> <td></td> <td></td> <td></td> <td style="text-align: right;">5,000</td> </tr> <tr> <td>Administration/Inspection</td> <td style="text-align: right;">10,000</td> <td></td> <td></td> <td></td> <td></td> <td style="text-align: right;">10,000</td> </tr> <tr> <td style="text-align: right;">Total</td> <td style="text-align: right; border-top: 1px solid black;">100,000</td> <td></td> <td></td> <td></td> <td></td> <td style="text-align: right; border-top: 1px solid black;">100,000</td> </tr> </table> <table border="0" style="width: 100%; border-collapse: collapse;"> <tr> <th style="text-align: left;">Funding Sources</th> <th style="text-align: right;">FY '11</th> <th style="text-align: right;">FY '12</th> <th style="text-align: right;">FY '13</th> <th style="text-align: right;">FY '14</th> <th style="text-align: right;">FY '15</th> <th style="text-align: right;">Total</th> </tr> <tr> <td>112 Measure A</td> <td style="text-align: right;">100,000</td> <td></td> <td></td> <td></td> <td></td> <td style="text-align: right;">100,000</td> </tr> <tr> <td style="text-align: right;">Total</td> <td style="text-align: right; border-top: 1px solid black;">100,000</td> <td></td> <td></td> <td></td> <td></td> <td style="text-align: right; border-top: 1px solid black;">100,000</td> </tr> </table>			Expenditures	FY '11	FY '12	FY '13	FY '14	FY '15	Total	Planning/Design	15,000					15,000	Constructn Cost other than Bldg	70,000					70,000	Professional, Tec & Other Svcs	5,000					5,000	Administration/Inspection	10,000					10,000	Total	100,000					100,000	Funding Sources	FY '11	FY '12	FY '13	FY '14	FY '15	Total	112 Measure A	100,000					100,000	Total	100,000					100,000
Expenditures	FY '11	FY '12	FY '13	FY '14	FY '15	Total																																																											
Planning/Design	15,000					15,000																																																											
Constructn Cost other than Bldg	70,000					70,000																																																											
Professional, Tec & Other Svcs	5,000					5,000																																																											
Administration/Inspection	10,000					10,000																																																											
Total	100,000					100,000																																																											
Funding Sources	FY '11	FY '12	FY '13	FY '14	FY '15	Total																																																											
112 Measure A	100,000					100,000																																																											
Total	100,000					100,000																																																											
<div style="border: 1px solid black; padding: 5px;"> Budget Impact/Other </div>																																																																	

Source: Lake Elsinore Capital Improvement Program FY 11-15-year Budget Proposal.

APPENDIX D - INVENTORY WORKSHEETS

SEE ATTACHMENTS – PART II

APPENDIX E – CROSSWALK-PLAN REVIEW

SEE ATTACHMENTS – PART III